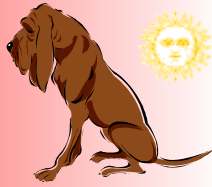


Dog Days of Summer



It's time to sit and relax by the glow of your radio dials and enjoy a great, cool conversation with friends on the Chew!

In Praise of the SDR Sites

This year has been challenging, to say the least, for every ham. Between heavy sunspot activity and the insistent crashes of lightning-generated interference, working the bands has at times, been a headache. I personally have been a proponent of using various SDR, (*software defined radio*) stations around the world, to aid my operations as a Net Control Operator. <http://kiwisdr.com/public/> is the master directory where you can call up the world map and you will see almost a thousand stations from which to choose. When doing the nets and just general radio calls, I know that even if people cannot hear me on RF, they can on the SDR and vice-versa. Give it a try and you may find that during poor conditions, you can still enjoy a good conversation on the Chew. If you have any questions as how to do this, contact Loby-WA2AXZ.



Oh lord won't you buy me...

Chris-W4CVG and several of the gang were reminiscing one morning about some of the old cars we've had over the years. Chris waxed poetically about a love of his life he lost years ago, a vintage Mercedes sports car. It was a beauty and if he'd kept it, it would have become a pricey collectors' classic today.



The "Chew"

SEVENTY-TWO

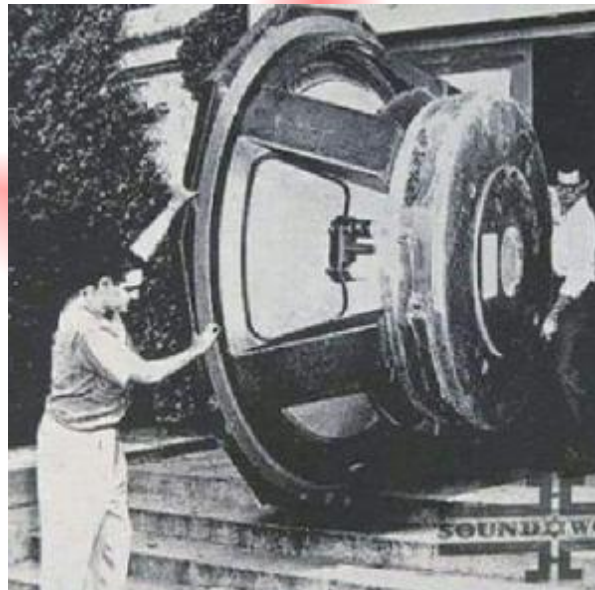


"Where Choosy People

Choose to CHEW!"

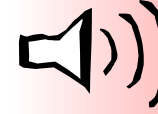
NEWSLETTER August 2024

CAN YOU HEAR ME NOW?



Yes, with this speaker installed in your shack, you can pick up the faintest signal anywhere on the band.

Seriously this is the worlds largest woofer! The Mitsubishi D160, the largest subwoofer ever built in the 1980s. It is 60 inches across, weighing in at over 400 pounds.



At full power, it can easily shatter windows and produces tiny earthquakes that can be felt like ground vibrations two-miles away.

At the Koriyama factory, the first test was initially carried out in the measuring room but stopped because the ceiling lights fell down due to the vibration. The outdoor test appears to have had a negative impact on the neighborhood. At a distance of about 300 feet from the speaker, the sound could be felt, but at a greater distance, it was transmitted as vibration and noise on the earth instead of an audible sound. Within a radius of 2 miles from the factory, there was vibration damage from small earthquakes as well as noises from walls and windows. I

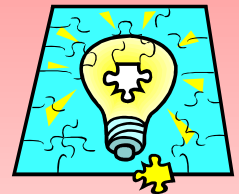
guess there is a way to deal with noisy neighbors after all.



WB2YZX-Charley

IDEAS WANTED!

The Chew over the past 20 years has been constantly evolving. Using the ideas and suggestions from check-ins and long time friends forms the bulk of our day-to-day operations on the Chew.



If you have any suggestions as to how we can make the Chew better, please feel free to contact Walt-KB3LGO or me, Loby-WA2AXZ, to discuss what you have come up with.

CQ Field Day...CQ Field Day

A good friend and fellow ham, Jack-KM8N, sends us a few photos of his group's ARRL Field Day activities. Jack is part of the



Miamisburg Ohio Radio Club-W8DYY. The crew got up early and in the tradition of Field Day and set up various antennas covering several bands. At the appointed hour, the flood gates were opened and most all bands sprang to life with the CQ-Field Day calls echoing

across the globe. As contacts piled up, operators switched positions to add to their



total contact list.

After a full 24 hours of operation, Field Day 2024 came to an end and the rewarding feeling filled each of the operators.

Jack and the gang have spoken with me over the past decade on 40m but due to friends moving away,



the group now meets on Mondays, Wednesdays and Fridays on Echolink at 7:45 am EDT on the W8DYY-R Echolink repeater. They are called the "Nylon" net as the group was formed decades ago by a few chemical engineers and workers at Dupont/Monsanto chemical works.

Stop by before the Chew, grab a cup of coffee and enjoy a good early morning conversation.

If you have photos and stories of your Field Day, please send them to Loby-WA2AXZ

Greetings from Mystic, Connecticut



Bill-KB1PKS is reporting in from his vacation spot in Connecticut. He and his XYL-Jan spent a little time at the seashore touring the vintage sailing ships. His favorite was the recently restored 1841 whaler, Charles

Morgan, the last wooden whaling ship built.

Another vacation pastime along the shore is stopping by the fantastic sea food restaurants featuring the fresh catch of the day, along with crab and lobster delights. Bill and Jan also took a ride on the old Essex Steam train, then a connecting steam-boat ride up the Connecticut River. All in all, they had an enjoyable time Together, seeing the sights and enjoying great food during their vacation.

There... and gone.

I was watching the ARRL Field Day exercises unfold on 40 meters. The band was overflowing with dozens of stations busy putting out CQs.

A minute before the official end of Field Day I took a photo of the band, chock full of operators trying to get their final contacts.



At 2 minutes after Field Day operations, 2pm EDT Sunday, June 23, 2024, the bands grew quiet, except for a few stragglers hanging on for one last log entry.



This brings up an important topic, at least for me. Use It or Lose It! During non-contest periods several of the amateur bands are eerily quiet. I know the FCC is waiting to carve up frequencies and give them away. So, if you have the chance, get on 10 and 15 meters, enjoy a QSO and show the powers that be that we will not relinquish our hard fought for frequencies.

Loby-WA2AXZ

**SEVENTY-TWO
AS METERS
HF
AND CHEW
1800**

Certificate of Appreciation

Presented to
Chad-KB1HPV

For showing all the volunteer spirit in covering
multiple N.C.S. positions on the Chew,
July 2024

Mike-MB1ZGO Bobby-MB1S017



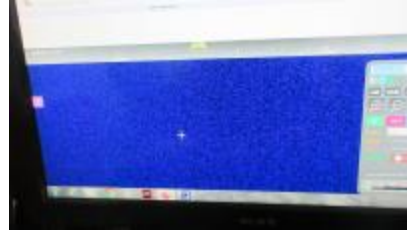
From time to time a special recognition will be given to members and net control operators for their contributions to the Chew. This month we thank Chad-KB1HPV for helping our group quite frequently.

Our "organization without organization" relies on volunteers to keep the airwaves alive, and Chad has been a great help, stepping in at a moment's notice when openings occur. Chad also is a woodworker at heart. He loves to chat with fellow woodworkers on the projects he undertakes. Building items out of scrap materials is his specialty though he is a wiz at broken furniture repairs and refinishing. His work has been featured in these pages and positive comments come from all around. He recently started a new project in both refinishing and rebuilding a tired old Zenith Tombstone AM-SW radio, made in the 1930s. As work progresses we will highlight the steps taken to restore the wood case, then the vintage chassis within.

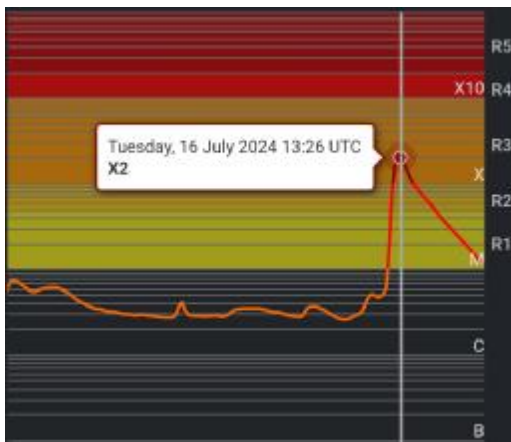


Speaking about *rotten* band conditions...

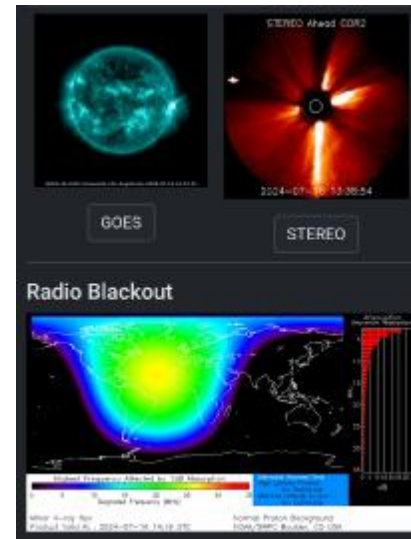
On the morning July 16, 2024 a brand new net control operator, Jacques-VA2KEZ, began his first net on the Chew. Things started out well enough as he picked up check-ins, then about 15 minutes after 9 am, BOOM, the bands collapsed! Jacques and everyone disappeared. I had several SDR listening sites open and each and every one was "blued-out." Even the display on my Icom 7300



was, as Bill Gates said, "the blue screen of death!" The band slowly came back after 10:15 am and stations began to report in. Walt-KB3LGO reported that we were hit with a Major X2 solar flare causing severe disruptions to most HF communications. Below is a chart from Walt



showing the solar spike zooming up to the X-2 level. The photos show the intensity of the flare.



We hope Jacques doesn't think rude welcomes are a common occurrence. Hopefully he will volunteer to come back and cover one of our Chew spots once again.

NEED QSLs
OR EYEBALL
CARDS ???



KB3IFH QSL
Cards

www.kb3ifh.homestead.com
72chew.net

Volunteer NCS's Wanted

We are in the summer doldrums where many of our NCSs take time off. We always are on the lookout for great people to step up to the mic and help fill-in when openings occur. If you would like to help out, please contact our net scheduler,



KB3LGO-Walt
waltg399@gmail.com